



GAT MONTHLY MEMBERSHIP PROGRESS REPORT

Results as of: 6/30/2023

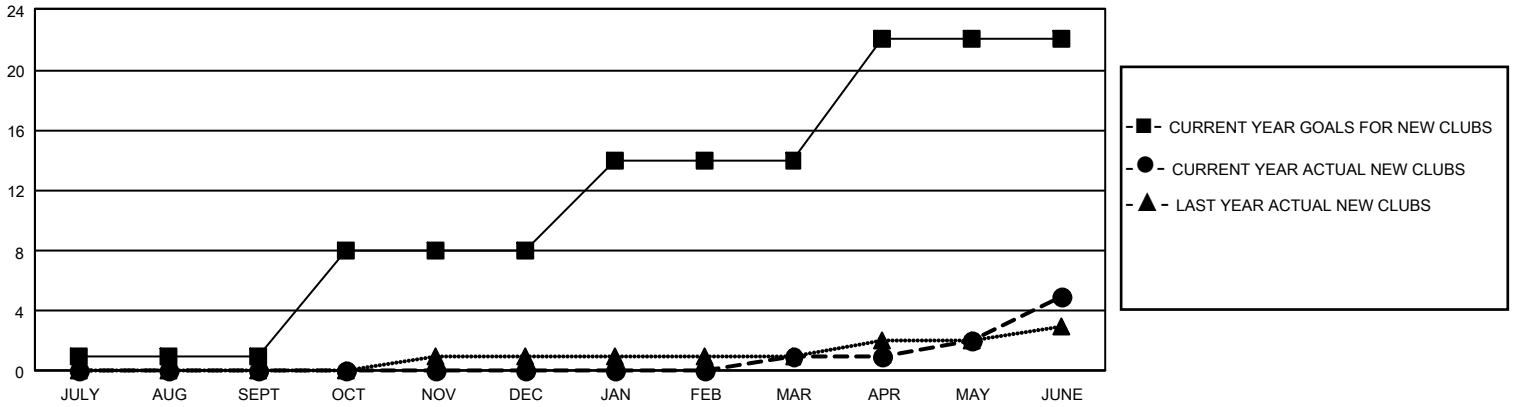
GMT Constitutional Area 1, Group C

REPORT DOES NOT INCLUDE CLUBS IN UNDISTRICTED AREAS.

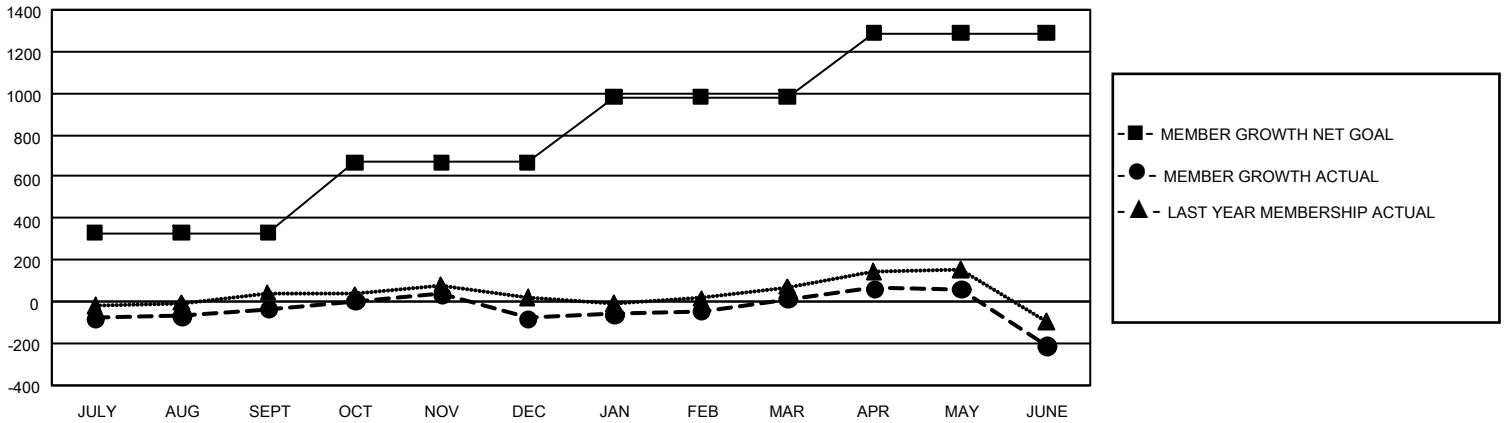
Clubs			
RESULTS FOR 2022-2023			
QUARTER	NEW CLUB GOAL	NEW CLUBS	DROPPED CLUBS
JULY/AUG/SEPT	3	0	4
OCT/NOV/DEC	21	0	0
JAN/FEB/MAR	18	1	1
APR/MAY/JUNE	24	4	7

Members			
RESULTS FOR 2022-2023			
QUARTER	MEMBER GROWTH NET GOAL	MEMBER GROWTH ACTUAL	DROPPED MEMBERS ACTUAL (including transfers)
JULY/AUG/SEPT	330	448	416
OCT/NOV/DEC	338	442	468
JAN/FEB/MAR	313	441	315
APR/MAY/JUNE	308	587	764

GOALS AND ACTUAL NEW CLUBS CUMULATIVE



GOALS AND ACTUAL MEMBERS CUMULATIVE



DROPPED CLUBS: 12	434 CLUBS OF 633 ADDED 1 OR MORE NEW MEMBERS	<u>GENDER DISTRIBUTION</u>	
		MALE	13,050 (67.18%)
<u>DROPPED MEMBERS</u>		FEMALE	6,367 (32.78%)
DECEASED	269	NON BINARY	0 (0.00%)
CLUB CANCELLED	29	PREFER NOT TO ANSWER	8 (0.04%)
OTHER	1,667	TOTAL FAMILY UNIT MEMBERS	3,857
TOTAL	1,965	FAMILY MEMBERS PAYING HALF DUES	1,956

[CLICK HERE FOR CUMULATIVE MEMBERSHIP DATA](#)